

# Back to SCHOOL

PEEK IN DAY

DATE: 14<sup>th</sup> June 2021

# Our Credentials

## Certifications and Affiliations

**Cambridge Assessment International Education**

**Certificate of Registration**

This is to certify that

**AMBITUS WORLD SCHOOL**  
has registered as a  
**Cambridge International School**

*Christine Ozden*  
Christine Ozden  
Chief Executive  
Cambridge Assessment International Education

REGISTERED SCHOOL IA101  
REGISTERED ON 23 JANUARY 2020

**Cambridge Assessment International Education**

**Certificate of Registration**

This is to certify that

**AMBITUS WORLD SCHOOL**  
has registered as a  
**Cambridge Primary School**

*Christine Ozden*  
Christine Ozden  
Chief Executive  
Cambridge Assessment International Education

REGISTERED SCHOOL IA101  
REGISTERED ON 23 JANUARY 2020

**Cambridge Assessment International Education** **CAMBRIDGE UNIVERSITY PRESS**

**Certificate of Registration**

This is to certify that

**Ambitus World School**  
has registered as a  
**Cambridge Early Years Centre**

*Christine Ozden* *Rod Smith*  
Christine Ozden, Chief Executive  
Cambridge Assessment International Education  
Rod Smith, Managing Director,  
Global Education, Cambridge University Press

REGISTERED SCHOOL IA101  
REGISTERED ON 13 APRIL 2021

Dear Sir/Madam,

Online Application No. - GL-00516-2-22

Scoring Status - Grant Letter

Letter -

MO: CISEARTY/SL/48516-2/2200R1+22 Date: 31/03/2020

The Manager:  
AMBITUS WORLD SCHOOL  
87/80/78 THE PINNES POND ROAD, GUNADALA, VUJAVWADA, KRISHNA DISTRICT ANDHRA PRADESH  
505304  
VUSURPRADESA  
ANDHRA PRADESH KRISHNA, 505004  
MC/PW/01/170

Subject: General Affiliation up to Secondary Level regarding  
Ref: Application No. SL-00516-2-22 dated 04.02.2020.

With reference to your application on the subject cited above, I am pleased to convey the sanction for General Affiliation as per details given below.

Affiliation No. used as User ID for both OASIS and LOCR/Registration Systems	133620
School No.	35233
Password for OASIS and LOCR/Registration System is same as that used for Affiliation Application.	
Affiliated for	Secondary School Examination Class 1 to 10
Category	Fresh Affiliation
Period of General Affiliation	01.04.2021 to 31.03.2024
Year and Month from which Admission can be taken in Class-X	1 April, 2021

<http://www.cambridgeinternational.org/0123456789101112131415161718192021222324252627282930313233343536373839404142434445464748495051525354555657585960616263646566676869707172737475767778798081828384858687888990919293949596979899100>



# Online continues...

**UNIFORM MANDATORY FOR ONLINE CLASSES**

# Cambridge Early Years prepares your child for their next step in their education:

## Route 1: An international education with the Cambridge Pathway

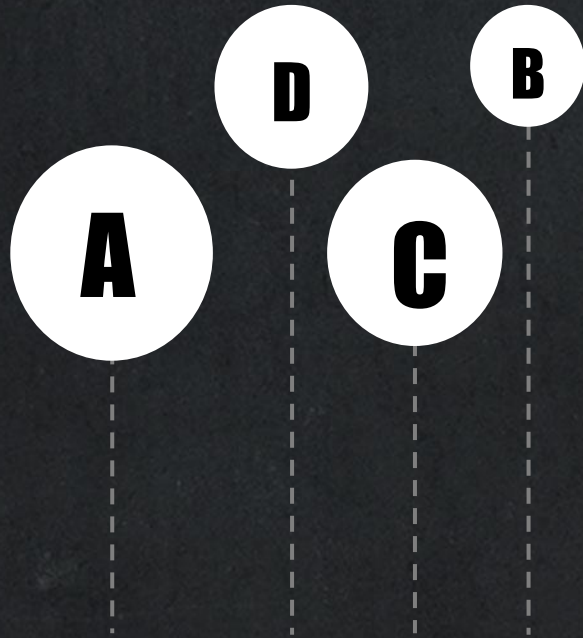
After finishing Cambridge Early Years, your child will be ready for a seamless transition to Cambridge Primary, and the rest of the Cambridge Pathway.



Cambridge Early Years is aligned with the National Education Policy (NEP) 2020, so when your child completes the programme they can also progress to local state or national curriculum in India.

## Route 2: State & National Curriculum in India

# CEM ASSESSMENTS



## A. Focus

Understand individual students potential

## B. Design

Identify patterns or trends in a cohort

## C. Effort

Understand student progress and discover strength

## D. Extra

Develop detailed learning plans.

# CLASS SCHEDULE

Full day classes

## Your lessons included for the session

- Subjects
- Music
- Dance
- Art
- Games
- Reading

<https://youtu.be/geQcAjBBowc>

**8.35 – 9.00**  
**Breakfast**

8.15 – 8.35 – Assembly  
9.00 – 9.40 – Period 1  
9.45 – 10.25 – Period 2

**10.25 – 10.35**  
**Break**

10.35 – 11.15 – Period 3  
11.20 – 12.00 – Period 4

**12.00- 12.40**  
**Lunch break**

12.40 – 1.20 – Period 5  
1.25 – 2.05 – Period 6

**2.05 – 2.15**  
**Break**

2.15 – 2.55 – Period 7  
3.00 – 3.15 – CT Period

# BASIC CARE FOR EYE

FOR ONLINE CLASSES



**KEEPING AN** *"eye"*  
ON YOUR CHILDREN DURING  
ONLINE CLASSES AT HOME

[www.theeyefoundation.com](http://www.theeyefoundation.com)



**THE EYE FOUNDATION**

SUPER SPECIALITY EYE HOSPITAL

Tamilnadu | Karnataka | Kerala

# Language policy

**01**

**CAIE GRADE I to III**  
II Language: Hindi or French



# One common platform

FIS – Futuristic Info Solutions



Android Users click on the below link:  
<https://youtu.be/2YGb-is9d1Y>

For IOS Users Click on the below link:  
[https://youtu.be/w\\_RSj\\_oaVky](https://youtu.be/w_RSj_oaVky)

Channel for

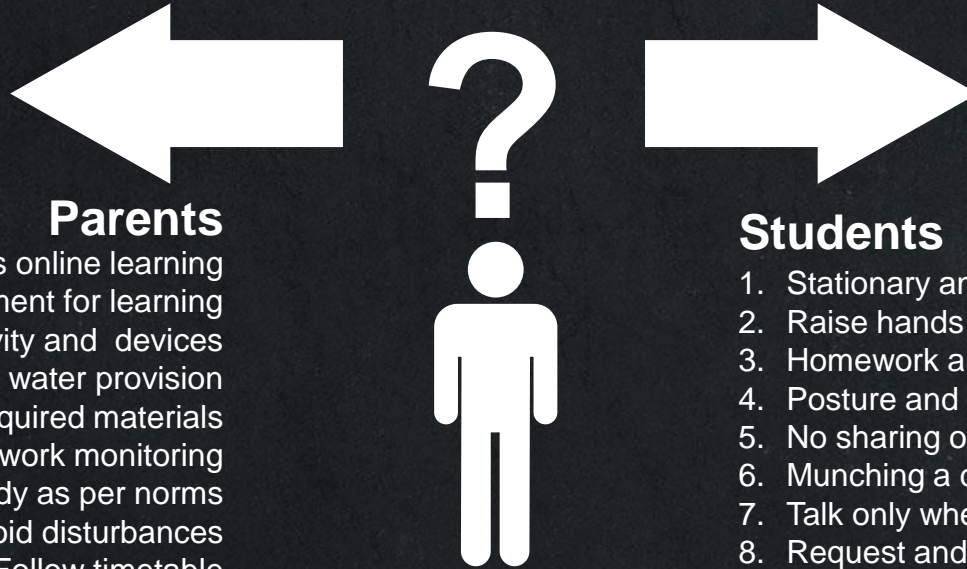
E content, Class links, Assessment Communication, Marks ,Report Card Fee particulars and many more



# Netiquettes

## School policies

Netiquette (net + etiquette) is the “code of conduct” applied to online spaces. Teaching students about netiquette is just as important as teaching them to use technology or master content. Much like traditional etiquette, which provides rules of conduct in social situations, the purpose of netiquette is to help construct and maintain a pleasant, comfortable, and efficient environment for online communication, as well as to avoid placing strain on the system and generating conflict among users.



### Parents

1. Motivating towards online learning
2. Suitable environment for learning
3. Internet connectivity and devices
4. Snacks and water provision
5. Ready required materials
6. Homework monitoring
7. Ready as per norms
8. Avoid disturbances
9. Follow timetable
10. Camera on

### Students

1. Stationary and materials ready
2. Raise hands or use chat box
3. Homework and assignments
4. Posture and environment
5. No sharing or recordings
6. Munching a distraction
7. Talk only when asked
8. Request and respect
9. Attend in Uniform
10. Focus in class

# Our planning

Academics with a right mix of online and offline

## Action plan

Lessons a unique mix of online activities, games and demonstrations

## Additional

Byju's, Metamorphosis and AI as vocational.

# Focus — Design — Effort — Extra

Academic planning and training for a better focus on classroom learning

## Planning

Learning and assessment to cater the student interest.

## Implementation

# New additions this year



# HOMework

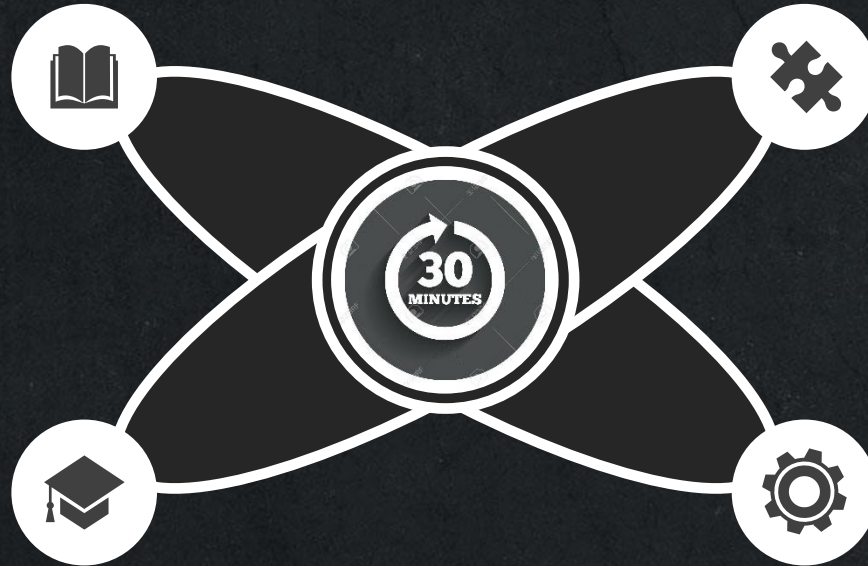
Alerts through the FIS app

## Submission

To complete and upload images in the FIS app. Tracking of homework also through the app

## Marks and grade

HomeWorks will be allocated marks and grades will be provided based on timely completion



## Time and subject

2 subjects maximum will be given per day each spanning a 30 minutes work.

## Projects

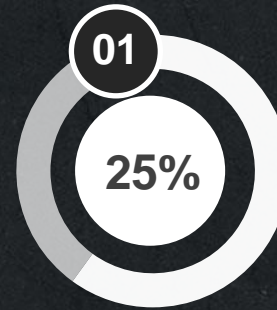
Projects and assignments will be given as lesson end/unit end work which will be given a week's time to complete.

# Assessment

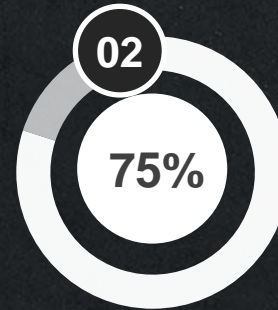
Grade I to VII CAIE

## CEM assessments

**UEA – Unit-End Assessment**  
**TEA + Homework**



**Session end assessments**



# Teacher – School Communications

Open communication channel

FIS APP



Anytime as alert  
reaches teacher

Emails



Using the  
corresponding  
class mentor id

Phone



Helpline or Academic  
number during  
working hours

Zoom



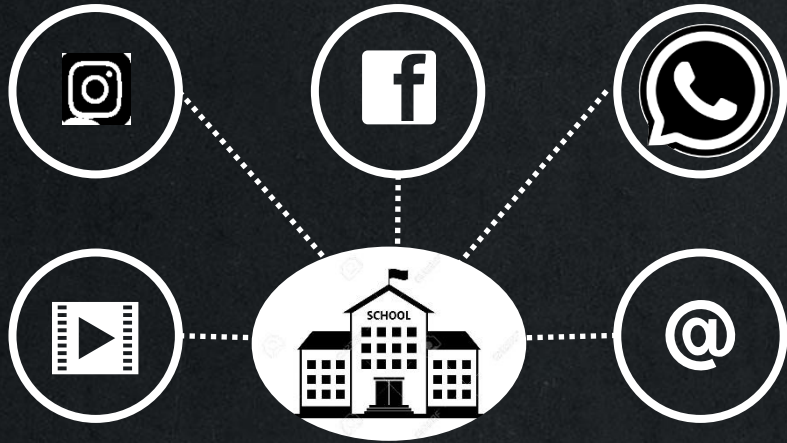
On Saturdays with  
prior appointment


## Email communication


Please include [principal.vja@ambitusworldschool.com](mailto:principal.vja@ambitusworldschool.com) for all email communications sent to the class mentor.

# Contact information

You can contact and see updates



 @Ambitusworldschoolvijayawada

 @ambitusvijayawada



**9100401111 – Helpline**  
**9100421111 – Academics**  
**9100481111 – Admissions**  
**9121283179 - Accounts**

**Website:** <https://www.ambitusworldschool.com/vijayawada/>

## Emails

Info email: [info.vja@ambitusworldschool.com](mailto:info.vja@ambitusworldschool.com)

Principal email: [principal.vja@ambitusworldschool.com](mailto:principal.vja@ambitusworldschool.com)

[primary\\_tl.vja@ambitusworldschool.com](mailto:primary_tl.vja@ambitusworldschool.com)

**Mentor email:** [grade1alpha.vja@ambitusworldschool.com](mailto:grade1alpha.vja@ambitusworldschool.com),  
[grade1beta.vja@ambitusworldschool.com](mailto:grade1beta.vja@ambitusworldschool.com)





Thank you

Let us work together for positive growth